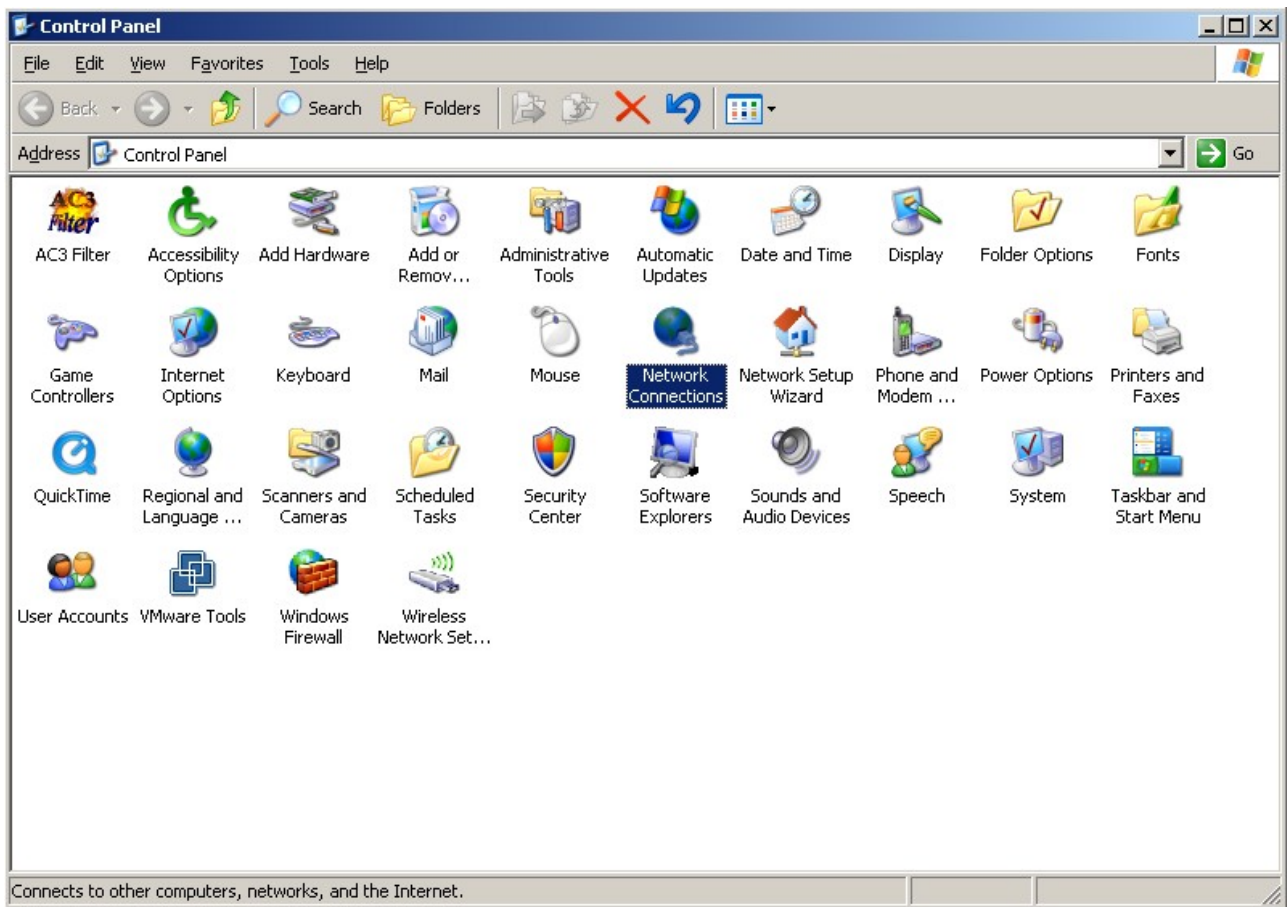
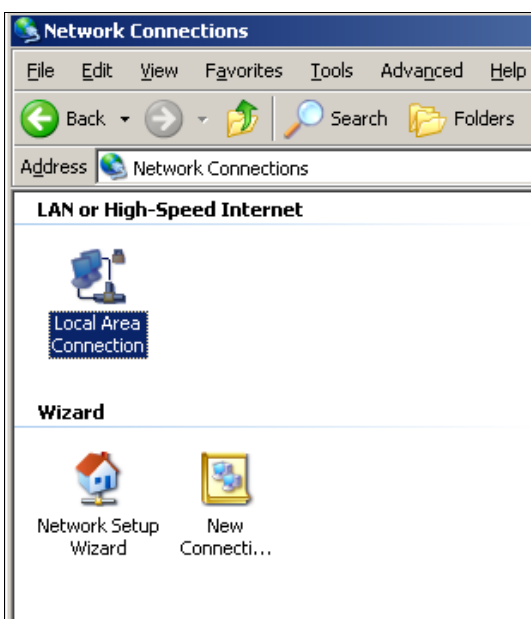


PANDUAN KONFIGURASI IP DNS (Sistem Operasi Windows XP)

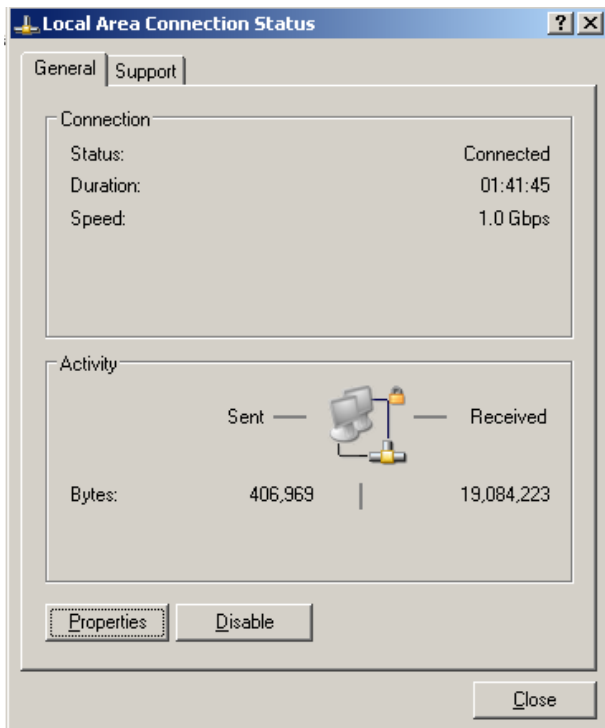
Buka menu **START** – **Settings** – **Control Panel** klik icon **Network Connections**



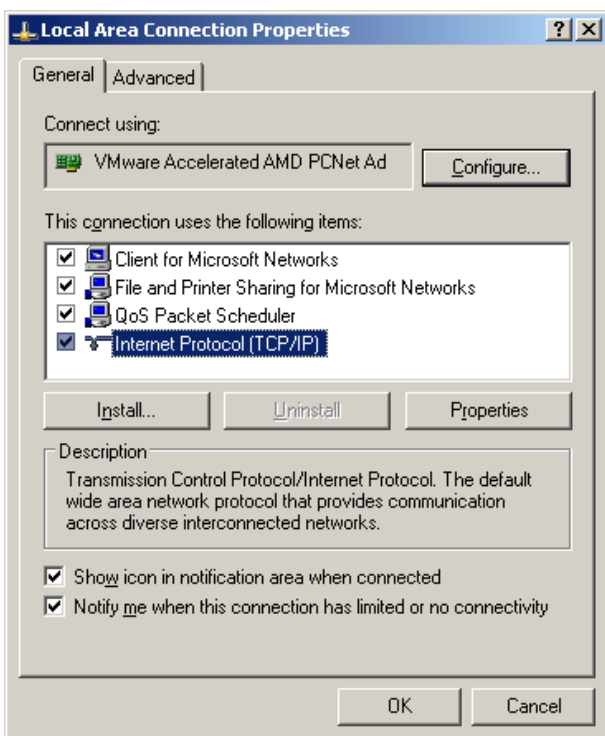
Pilih (klik) icon **Local Area Connection**
Atau (klik) icon **Wireless Network Connection**, bila menggunakan koneksi WiFi



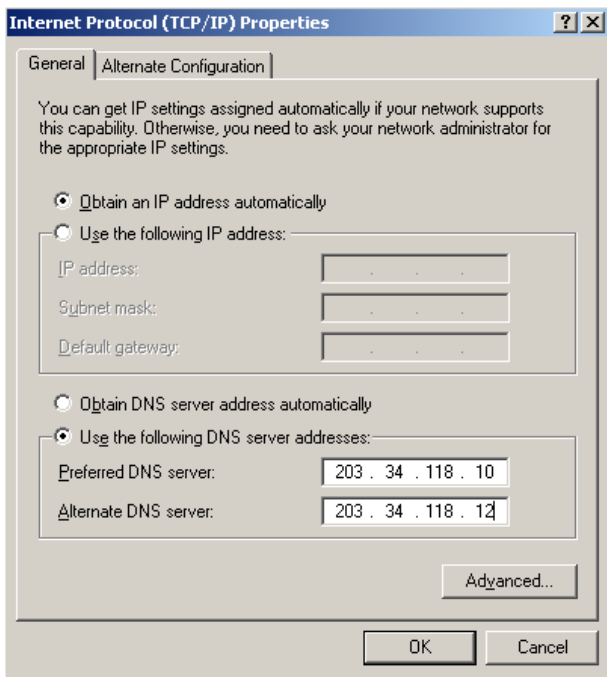
Pilih (klik) tombol **Properties**



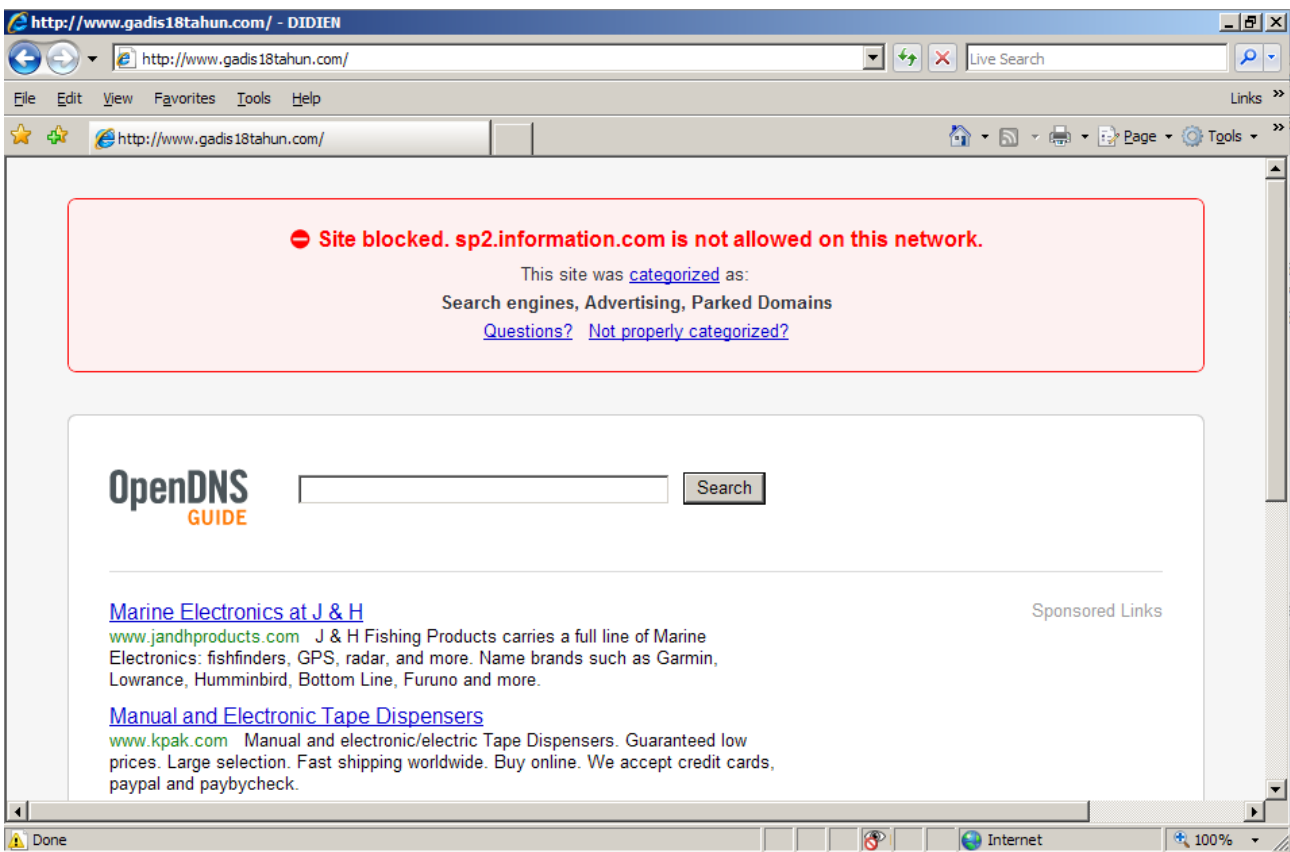
Pilih (klik) menu check box **Internet Protocol (TCP/IP)**
Kemudian pilih (klik) tombol **Properties**



Klik bullet menu **Use the following DNS server address**
Isikan pada bagian **Preferred DNS Server** : **203.34.118.10**
Isikan pada bagian **Alternate DNS Server** : **203.34.118.12**



Kemudian pilih (klik) tombol **OK**
Lakukan uji coba, buka URL/URI konten negatif dengan browser



DNS filtering Nawala Project telah berfungsi dengan baik.

© 2008, Nawala Project